

GAPVAX
MC
SERIES
 COMBINATION JETVAC



LOOKING FOR A SINGLE AXLE? WE'VE GOT YOU COVERED!

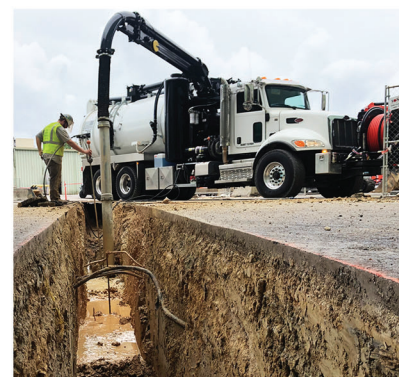
- 4 - 8 cu. yd. debris body options available
- Most features and options offered in the tandem model are the same for the single. Talk to your sales rep to find out more!



G2X NEXT LEVEL PERFORMANCE

- Push-button operation with on-screen instruction
- Touch screen engagement from the front control box (optional in cab)
- Capability to move the front hose reel from inside the cab
- Smooth operation with joystick and wireless controls
- Dump and Washout functions on wireless controls
- Curbside dump capabilities
- Water and fuel consumption trackers, job card and more
- Complete system and chassis diagnostics

Ask about the G2X option for your MC Series Combo unit!



Your authorized
 GapVax Dealer:

GapVax Gulf Coast
 4510 Underwood Rd
 La Porte, TX 77571
 281-884-8658



Headquarters
 575 Central Ave.
 Johnstown, PA 15902
 888-442-7829



GAPVAX
MC
SERIES
 COMBINATION JETVAC

GAPVAX MC SERIES

COMBINATION JETVAC

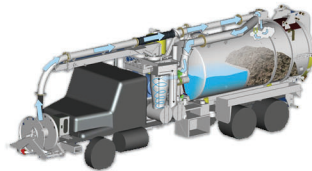
Our MC series combination truck is built by the operator for the operator, making it ideal for contractors and municipalities alike. The first thing you'll notice is our sturdy front hose reel. We will only build our hose reels on trucks with extended front frame rails supplied by the chassis OEM. Using extended rails for the hose reel base maximizes stability, slows bearing fatigue, and provides effortless control while operating. It's not a coincidence that GapVax MC units have been shown to last longer and cost less to maintain than other brands. You can trace this longevity back to our full-length 6" steel subframe. This industry-leading subframe reinforces the chassis frame and minimizes frame flexing while driving or operating the boom. Building on a solid foundation reduces stress, dampens vibration, and enables components to last longer and perform better. Unlike other brands, the GapVax water tank comes standard in 3/16" stainless steel. Plus, it's located well above the truck's frame, protecting it from the accidental scrapes and punctures that ultimately lead to water leaks.



BOOM SYSTEM:

- 8" Telescoping boom, with a 180° rotation
- Standard 9' extension, 26' reach from center
- Heavy duty dual lift cylinders
- Worm gear driven

8" TUBE IN TUBE BOOM



VACUUM SYSTEM:

- Positive displacement pump; 3,500 CFM, 16" Hg
- 500 HP transfer case with air-shift engagement
- Optional 4,000 CFM/27" Hg PD Blower

4,500 CFM, 18" HG PD BLOWER

FILTRATION:

- 10" Stainless steel floatball shutoff
- Centrifugal cyclone separator with full-opening door, 20" cleanout and removable vortex finder
- Washable, stainless steel vee wire screen (300 micron)

MULTI-STAGE FILTRATION



OTHER FEATURES INCLUDE:

- Mid-ship transfer case directs the power of the engine to the blower and hydraulic system
- Noise and vibration dampening mounts for blower
- Full length 6" subframe to reinforce strength and allow for tube trays

EXTENDED FRONT FRAME RAIL

FRONT HOSE REEL:

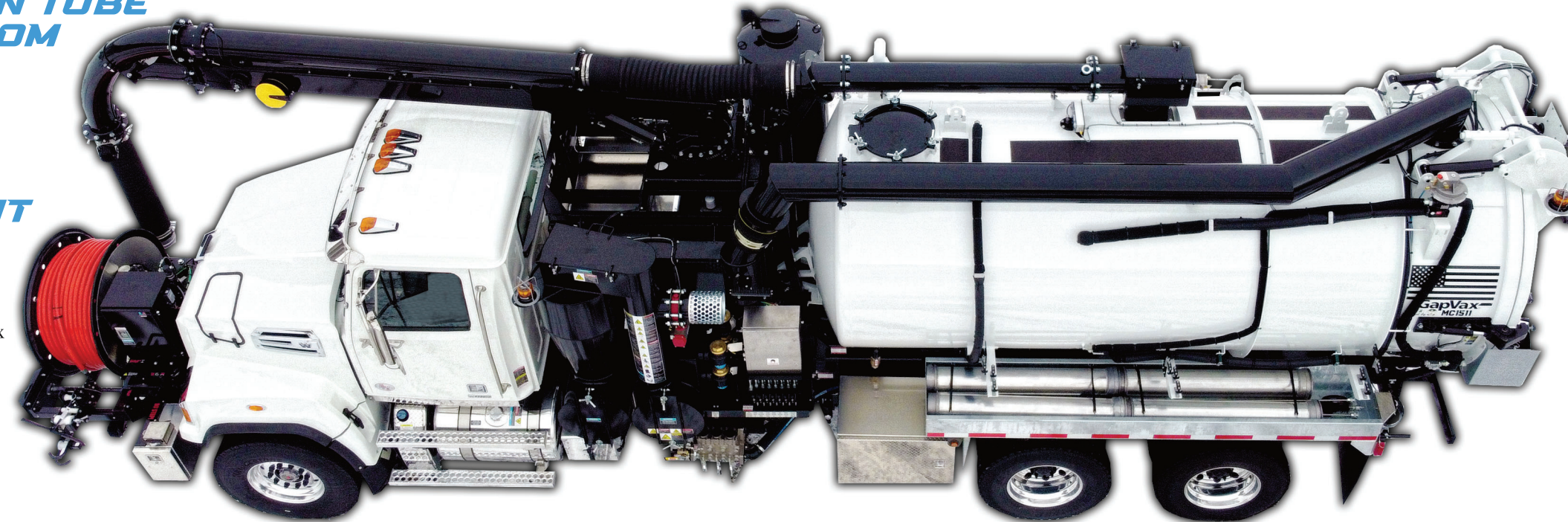
- 180° Rotation
- Hydraulically powered direct-drive gearbox
- 1"x800'; 1-1/4" x500'; or 3/4"x1,200' reel capacity
- Optional auto-level wind
- Fully enclosed control panel



80 GPM; 2,000 PSI

WATER SYSTEM:

- 500-2,000 gallon water tank capacity
- Stainless steel water tank
- Shaft-driven Tri-plex water pump
- Optional water pump flow up to 100 GPM and PSI up to 3,000



OPTIONS:

- Stainless steel debris body
- HX package
- Pump-off systems
- Body flush-out system
- Interior coating in debris tank
- Lateral hose reel kit
- Hydraulic tool circuit
- Wireless remote/pendant
- Storage options
- Lighting options

*See website for complete listing gapvax.com

TOP LOADING BODY

DEBRIS BODY:

- 5-13 cu. yd. debris body options
- *Single axle configurations available
- Double acting lift cylinder that provides a stable 50° dump angle for fast unloading and easy clean-out
- Full opening tailgate with four fail-safe locks; locks are "field-adjustable" with a simple wrench



VERSATILE.

RELIABLE.

DURABLE.



*SPECS SUBJECT TO CHANGE WITHOUT NOTICE