

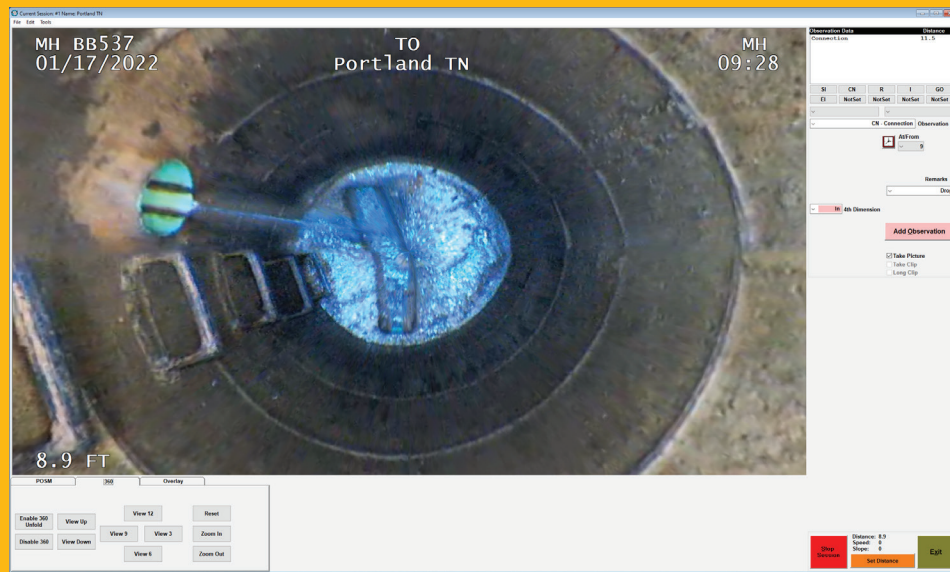
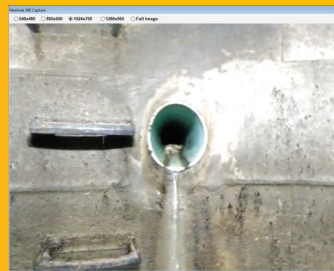
**Flat View or 360° Video of the Manhole**

- Capture in HD up to 4K video.
- Easy lighting and elevation control.

**360° Video Options**

Zoom in and out of the video to make observations from any direction, any angle, any clock position.

- Creates a flat image of the manhole.
- Gives you virtual pan and tilt in 360° video.
- Generate observation images for reports.
- Video capture of infiltration and flow helps you detect issues more accurately.

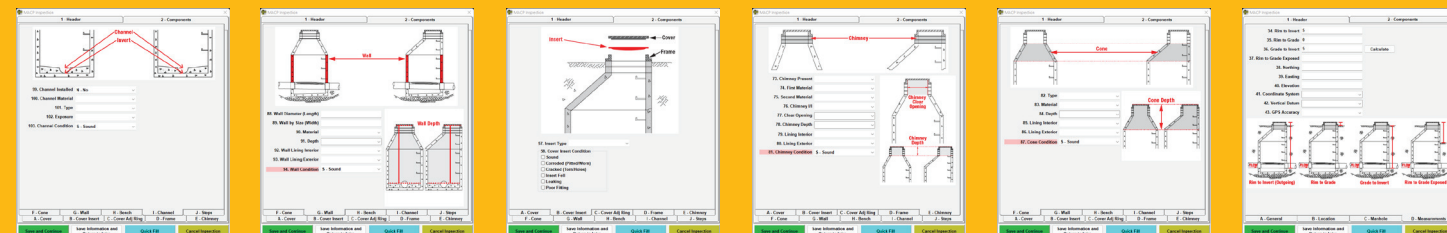
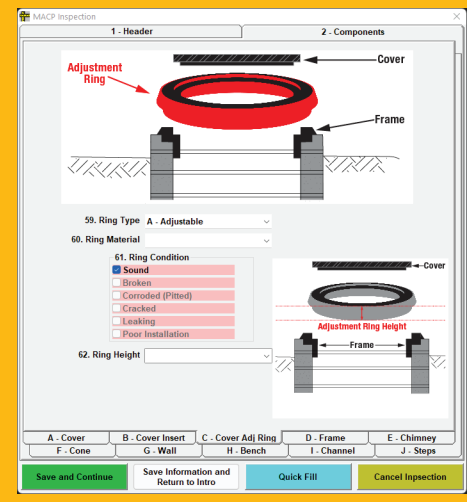
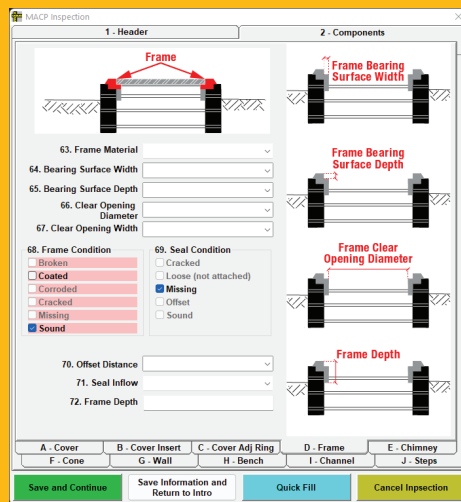


**All Fields and Tabs are Pre-labeled with their NASSCO MACP Manual Locations**

100% NASSCO MACP certified.

Precise distance and position is automatically:

- Tracked live on the monitor.
- Shown on the video playback.
- Filled into the office reports.



**OWL VISION SYSTEMS**



**360° Manhole Inspection**

**The Power to See in the Dark**

Introducing the next generation manhole camera. Designed to capture sharper, clearer video that makes your inspections easier and more accurate.



## Lantern

### The Heart of the Owl Vision System

Custom dual camera with 360° coverage.

- White light LEDs.
- Precision CNC machined of aluminum and brass.
- Sealed for water resistance.



## Briefcase

### The Ruggedized Control Box

- Designed for POSM Software.
- Compatible with most mainline and manhole camera systems.
- "Battle tested" in extreme conditions and temperatures.
- Ports for USB, Ethernet, BNC video, and Owl Vision manhole control.
- Multitude of computer & video input combinations.
- Exceptional contrast for improved sunlight readability.
- Designed and assembled in the USA.



## MH 360° Pole Camera

### A Stable Video Platform

Descends up to 22 feet (6.7 meters).

#### Ring Mount

- Easy setup on raised or above-grade manholes. Camera locks into the ring mount with two stabilizing pins.



#### Tripod Mount

- For easy, stable setup, even on uneven manholes.



## Mainline and Push Camera Control

### Further Tech and Specs:

- LCD 18.5" touchscreen, LED Backlighting.
- Full High-Definition 1920x1080 (1080P) resolution.
- 2253 Sensoray, USB QSB Quadrature Distance Encoder and software overlay.
- T6 temper 6061 high-quality, heat-treated aluminum alloy.

